



User Manual

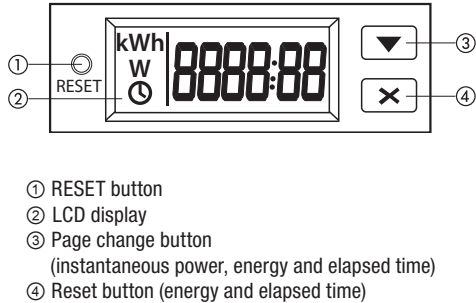
POWER CONSUMPTION METER

Read all the instructions carefully

Energy meter to monitor the consumption of the connected appliance. It shows the power W, energy KWH and total running time. In case of power failure the data are stored in memory and saved.

Code	Model	Description
VE798600	Energy Monitor	Energy meter for Italian plug/socket
VE798700	Energy Monitor	Energy meter for German plug/socket

DESCRIPTION



SAFETY WARNINGS

- 1) Risk of electric shock:
- Keep away from children
 - Do not power on or connect the device if any part of it is damaged.
 - Fully insert plug
 - The adaptor is for indoor use only
 - Use only in dry environments
- 2) Risk of fire:
- Do not exceed electrical rating
- 3) In case of cleaning disconnect the power supply and use a dry cloth.

WARNING: Do not plug two or more meters together!



Information to users pursuant to art. 14 of the directive 2012/19 / EU of the european parliament and of the council of 4 july 2012 on waste electrical and electronic equipment (WEEE)

If the crossed-out bin symbol appears on the equipment or packaging, this means the product must not be included with other general waste at the end of its working life.

The user must take the worn product to a sorted waste center, or return it to the retailer when purchasing a new one.

Products for disposal can be consigned free of charge (without any new purchase obligation) to retailers with a sales area of at least 400 m², if they measure less than 25 cm.

An efficient sorted waste collection for the environmentally friendly disposal of the used device or its subsequent recycling, helps avoid the potential negative effects on the environment and people's health, and encourages the re-use and/or recycling of the construction materials.

TECHNICAL CHARACTER

- Power supply: 230 V ± 20%
- Maximum current: 16 A
- Rated power: 1 W~3680 W
- Operating frequency: 45~55 Hz
- Precision (at 230 V, 50 Hz, 2 A, 23°C):
 - Energy ±1.0%
 - Active power ±2.0%
- Maximum consumption: 1 W
- Operating temperature: 5°C ÷ 40°C
- Maximum relative humidity: 80% for temperatures up to 30 °C, or 50% a 40 °C
- Measurement category II
- Pollution degree 2

REFERENCE STANDARDS

10-2024

Compliance with Community Directives 2014/35/UE (LVD) and 2014/30/UE (EMCD)
is declared with reference to the following harmonized standards: • EN 61326-1 • EN 61326-2-2 • EN 61010-1